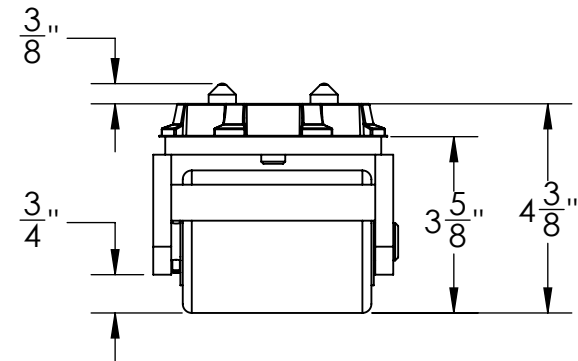
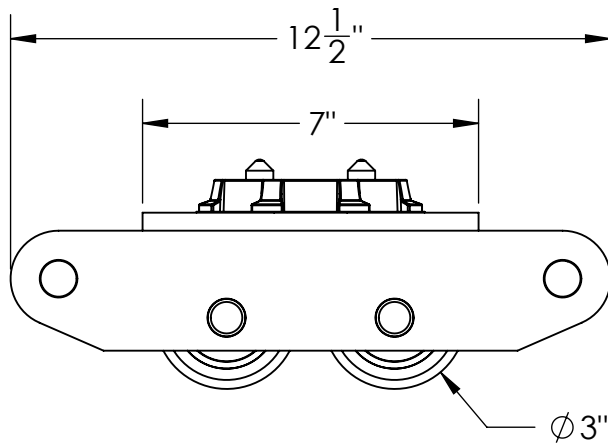
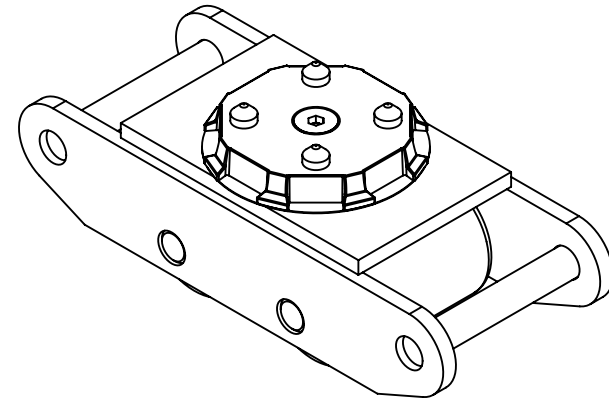
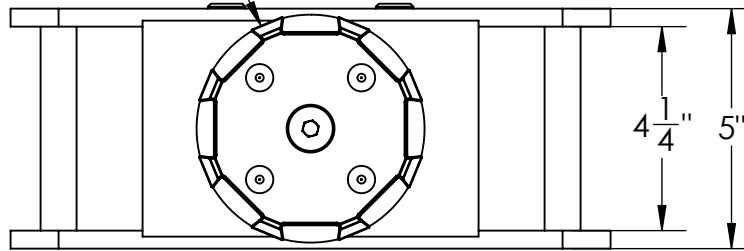




$\phi 4 \frac{3}{4}"$
Swivel Top



Approval Print
Cherry's Industrial Equipment
Date Sent: _____

- ☐ APPROVED. PROCEED WITH FABRICATION
- ☐ APPROVED AS NOTED. PROCEED WITH FABRICATION. FURNISH REVISED PRINTS
- ☐ REVISE AS NOTED. RE-SUBMIT FOR APPROVAL. DO NOT FABRICATE.

Tolerances Unless Otherwise Specified					<div>Mark 2 Poly Roller Skid</div> <div><div>600 Morse Ave. Elk Grove Village, IL 60007</div></div>	Date:	10/2/2012
Decimals: 0.X = +/- 0.1 0.XX = +/- 0.01 0.XXX = +/- 0.005		Angle: +/- 1 Fraction: +/- 1/4				Scale:	1:xx
This drawing is confidential and is supplied on the express condition that it is not copied or communicated to other persons or companies		Third Angle Projection				Drawn By:	RJL
Do not scale - If in doubt, ask Please inform if modifications are made during manufacture			X X/X/XXXX XXX			Checked By:	RJL
		All Units in Inches	# Date By			Material:	Steels
		Drawing Revisions				Weight:	19 lbs. Aprx.
						Drawing #:	RSMK2a