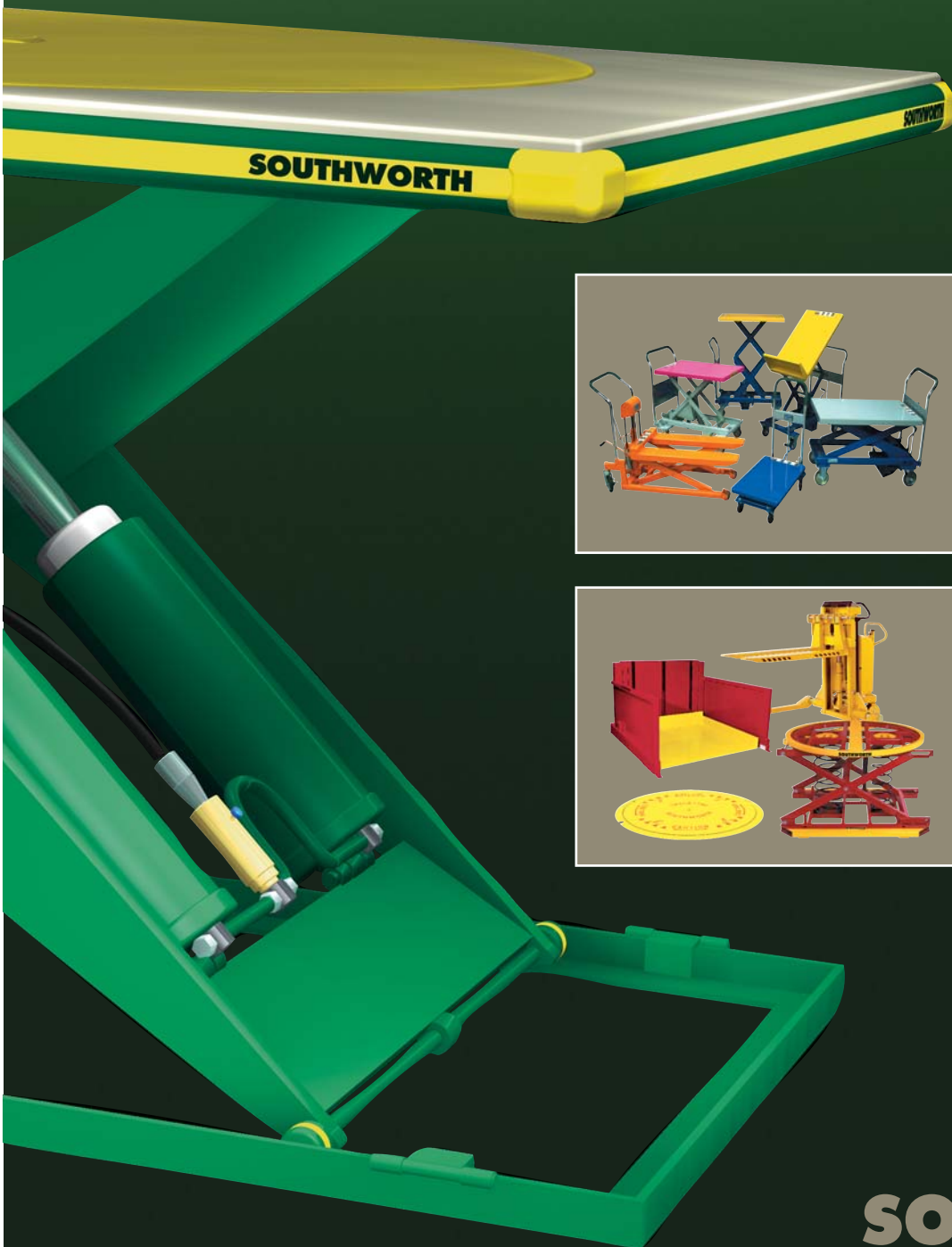
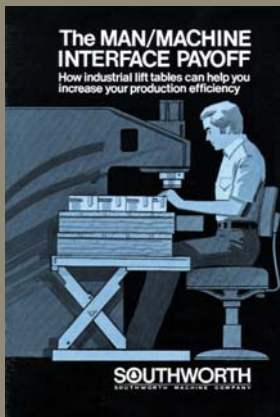


# Making Work Faster, Safer, and Easier with Lifting, Positioning and Transporting Products



**SOUTHWORTH**  
We'll Show You How

# Increase Worker Productivity and Profits with Improved Ergonomics



THE MAN/MACHINE  
INTERFACE PAYOFF  
Published 1972

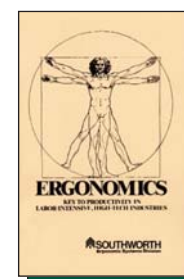
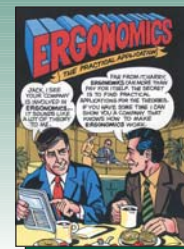
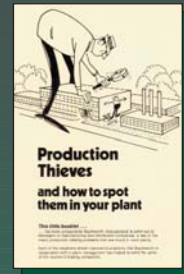
When we began writing about Ergonomics more than 30 years ago, we were simply attempting to bring a more scientific perspective to a common sense issue. If you consider the capabilities and limitations of the worker in the design of the workplace, the worker will be more productive and that productivity contributes to profit.

At the time we had no idea that the topic of ergonomics would become so widely discussed, by so many people, in so many professions, with so many agendas. Despite all of the politics and hoopla, our view today is the same as it was 30 years ago. The practical application of ergonomic principles is a core business proposition. Yes, it is about reducing worker fatigue and the risk of worker injury, which are very worthwhile objectives. However, the real desired benefit driving factory or warehouse investment is increased productivity and an improved bottom line. That's what an investment in practical ergonomics produces and that is the point we have been making for decades.

Improvement in productivity from the use of ergonomic equipment is easier to achieve and more important than ever. Lean manufacturing requires minimizing material handling and any approach to the products described in this brochure can do just that. In an effort to demonstrate that ergonomic equipment will "pay for itself" we have developed a simple cost justification wheel. It shows how percentage gains in productivity can usually provide full payback of equipment costs in just a few months. If you would like a wheel, just give us a call and we'll be happy to send you one.

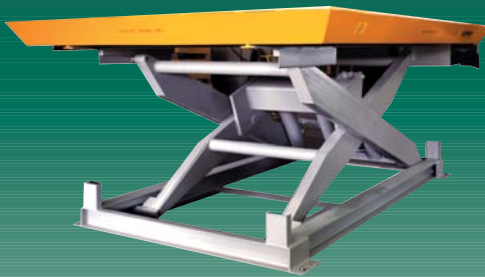
Southworth is proud to offer more products that improve productivity than any other materials handling company. The following pages have specific products and descriptions of how they can improve your company's bottom line. For more information please call us at 800-743-1000 or visit [www.SouthworthProducts.com](http://www.SouthworthProducts.com).

**SOUTHWORTH**  
We'll Show You How



# TABLE OF CONTENTS

The Industry's Broadest and Most Comprehensive  
Line of Lifting and Positioning Equipment



**Lift Tables . . . . . 4-5**

**Specialty Tables . . . . . 6-7**

**Container Handling . . . . . 8-9**

**Pallet Handling . . . . . 10-11**

**Portable Lifts . . . . . 12-13**

**Engineered Solutions . . . . . 14-15**

# Lift Tables

There are literally hundreds of uses for lift tables in manufacturing, warehousing and distribution facilities. The addition of these inexpensive devices makes the job faster, safer, and easier.

Some typical applications include: machine feeding and offloading; product assembly; inspection quality control repair; feeding and offloading conveyors; and bridging different conveyor levels. With more models and options than any other manufacturer, Southworth is your best choice for lift tables that stand out from all others in performance, ease of use and service life.

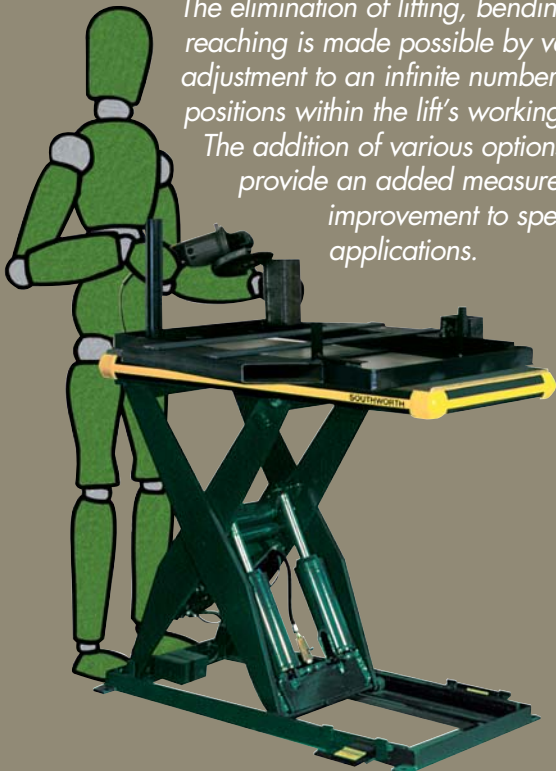
- Contoured legs for lower collapsed height
- Lubricated for life bushings
- Low pressure hydraulics
- Comfort edge design
- Wear indicating rollers

For more details request our Lift Table catalog.

*Positioning the work is easier, safer, and much more productive than positioning the workers.*

*The elimination of lifting, bending and reaching is made possible by vertical adjustment to an infinite number of positions within the lift's working range.*

*The addition of various options can provide an added measure of improvement to specific applications.*



## Improve Productivity



### Backsaver Lift™

Literally millions of configurations available.



### Backsaver Lite™

Industrial grade lift without the industrial grade price.

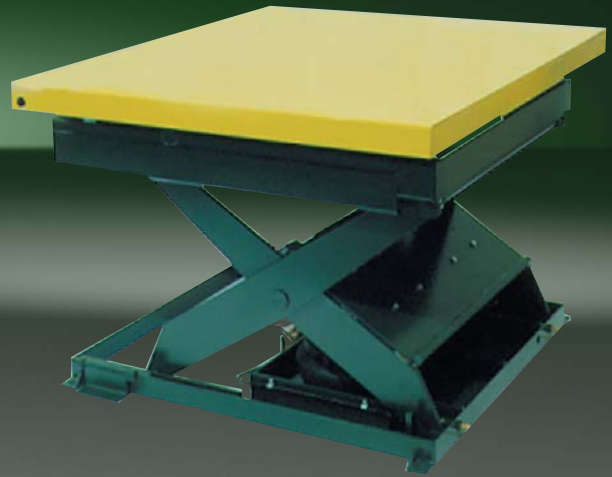


# While Reducing the Risk of Worker Injury



## Flush Mount Turntable Lift

Move the work around, not the worker.



## Pneumatic Lift Tables

For use anywhere that "shop air" is available.



## Backsaver Lite™ Compact

Tiny footprint with 36" lifting height.



## Stainless Steel Lift Tables

A wide variety of options for washdown environments.

# Specialty Tables

Some lift table requirements fall outside the parameters of our Backsaver Line such as heavy loads, extreme load dimensions, high vertical travel and pallet jack accessibility.

In such cases, one of our Special Use Lifts can do the job nicely. In addition to the Backsaver line, Southworth manufactures a number of lift tables for specialized applications.

They include tables with:

- Extra long and extra wide platforms
- Increased capacity
- Extended vertical travel
- Hand pallet truck accessibility

For more details request our Specialty Lifts catalog.

*Incorporating these special use lift tables into many applications not only makes a single worker more productive, it often allows one worker to perform tasks that normally require two. In either case, the work environment is always safer and more efficient.*

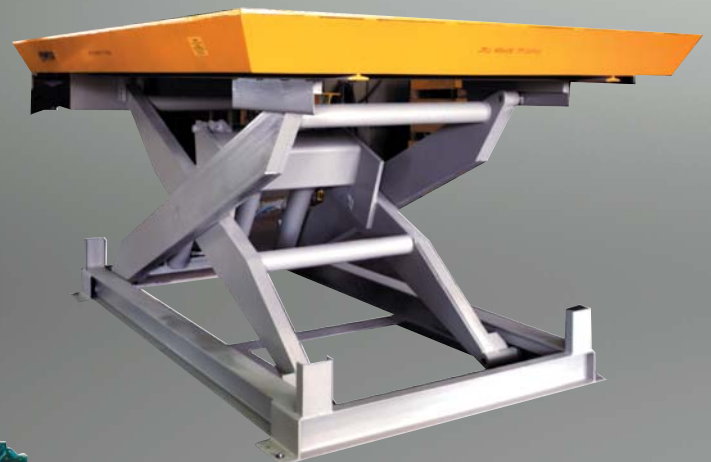


## Increased Capacity, Length,



### Floor Height Lift Tables

Lowers to floor level for loading with a hand pallet truck.



### Heavy-Duty Lifts

Lift loads up to 25,000 lbs. with ease.

# Width, Vertical Travel and Pallet Jack Accessibility



## LIFTMAT™ Lift Tables

Unobstructed access with no reachover.



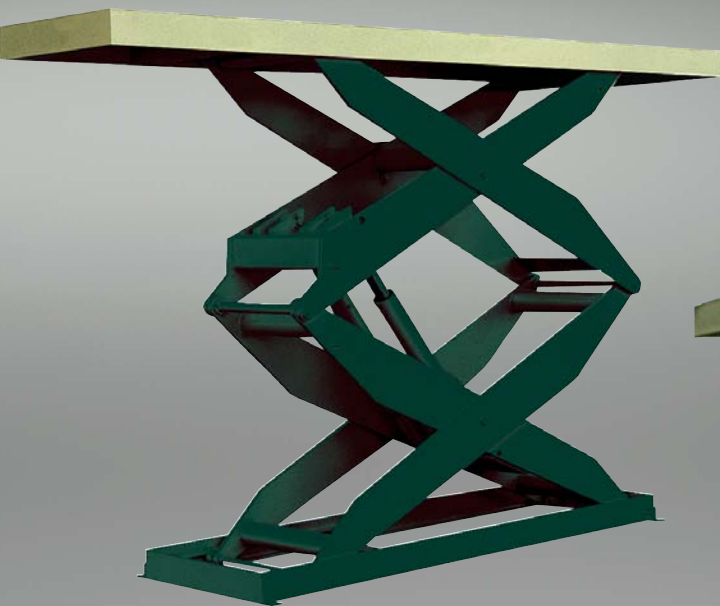
## Mast Style Lifts

Available with forks or smooth platform.



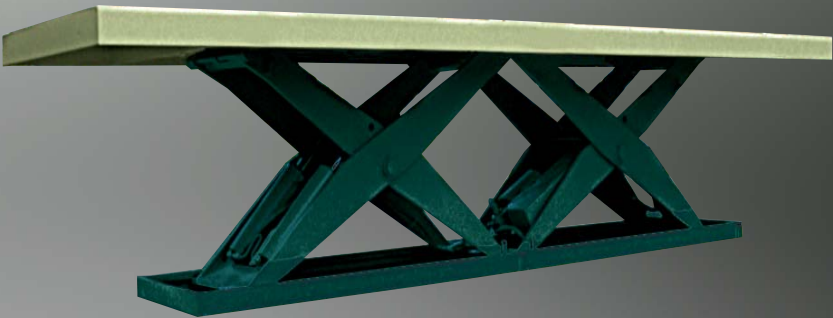
## L Series CAM Lifts

High capacity in a small footprint.



## Spacesaver™ Lifts

Raise loads up to 14' elevations



## Tandem Lifts

Choose double length, double width, or both.



# Container Handling

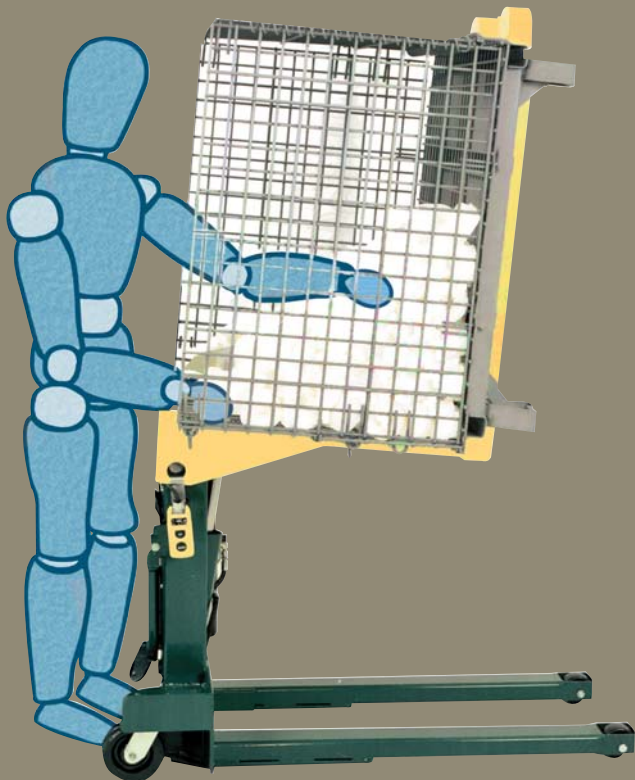


Accessing parts and containers is one of the most significant productivity thieves in any manufacturing or assembly operation. Southworth container tilters improve productivity and safety by positioning baskets so that parts are easily accessible without bending, stretching, or reaching. Southworth offers more models and configurations of container tilters than any other manufacturer.

- Capacities up to 4,000 lbs
- AC or DC power
- Hand pallet truck accessibility
- Independent control of lift and tilt

For more details request our Container Tilter Catalog.

*In almost every case we've ever seen, production machines work faster than the people feeding them. Getting parts to machines faster not only increases worker productivity, it increases machine productivity, improving R.O.I. and shortening the amount of time it takes for production equipment to "pay for itself", while always improving the safety of the worker.*



## Handle Parts in Baskets



### E-Z Reach™ Portable

Our most popular tilter due to its versatility.

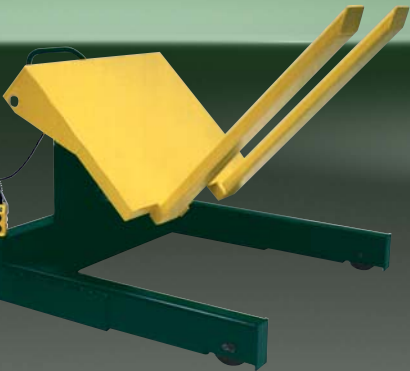


### E-Z Reach™ Roll-On

The most economical solution for most applications.



# or Totes Without Bending, Lifting or Reaching



## **E-Z Reach™ Straddle**

or containers with leg reinforcing bars or closed bottoms.



## **Pneumatic Lift and Tilt**

Available in lift and tilt or tilt only configurations.



## **E-Z Reach™ Universal**

Works with all containers and can be loaded with a hand pallet truck



## **E-Z Reach™ Lift and Tilt**

For precise positioning of height and angle.



## **Z-Lift and Tilt Tables™**

Lift and tilt with hand pallet truck accessibility.

# Pallet Handling



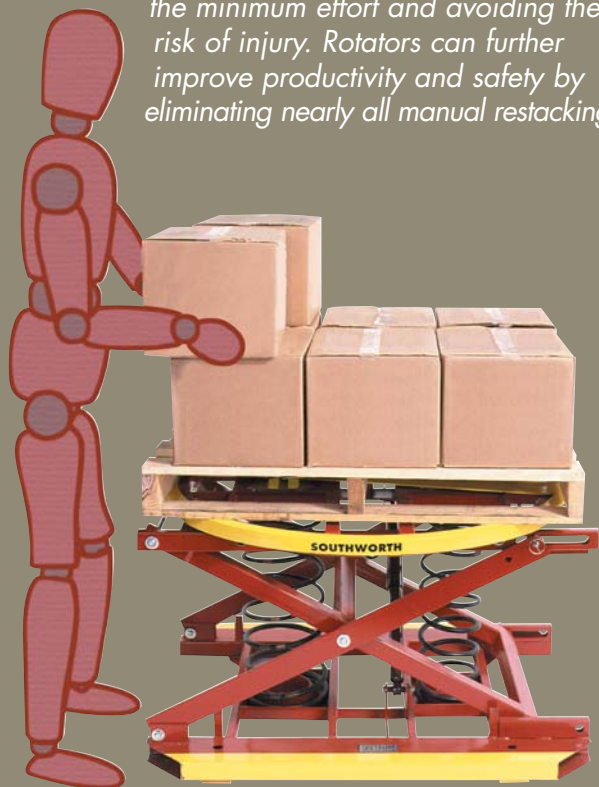
More items are shipped on skids or pallets than all other packaging methods combined. Loading and off-loading these pallets is always a backbreaking, time consuming job. Southworth PalletPal Products speed up and simplify the process, safely increasing the amount of goods that can be shipped or received every day.

Two decades ago, Southworth introduced the original PalletPal® Level Loader for manual pallet loading and unloading. Since then, the Southworth pallet handling line has grown to include:

- Spring and air actuated units
- Roll-On units for use with hand pallet trucks
- Turntables
- Mobile Levelers and Pallet Rotators

For more details request our PalletPal catalog.

*By maintaining a constant working height and nearside access as objects are added or removed, workers can build and break down pallet loads quickly and easily, while expending the minimum effort and avoiding the risk of injury. Rotators can further improve productivity and safety by eliminating nearly all manual restacking.*

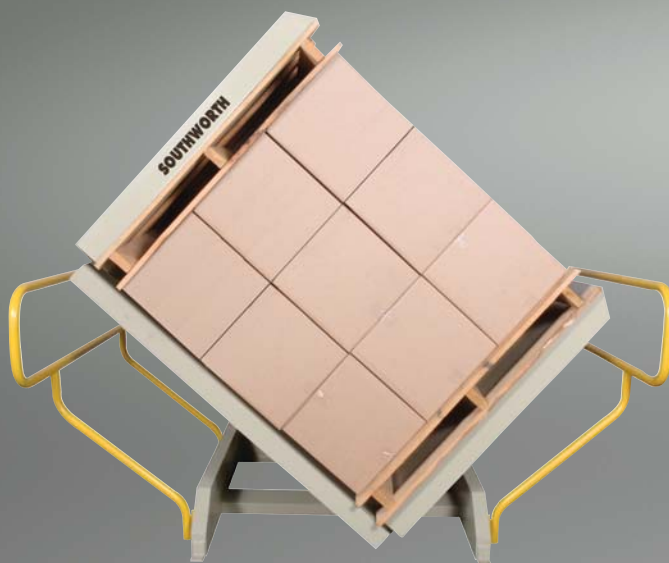


## Load Pallets Quickly and



### PalletPal® Level Loader Spring Actuated

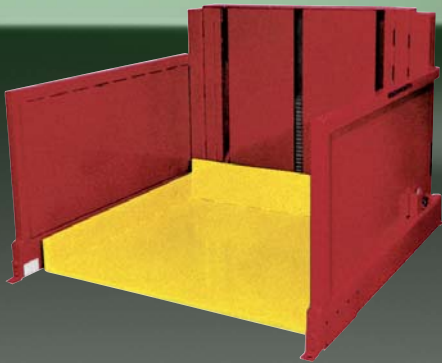
The automatic mechanical leveler that started a revolution.



### Pallet Rotators/ Skid Turners

Transfer loads from one skid to another or from skids to slip sheets.

# Safely Without Lifting, Stretching or Walking



## Roll-On™ Level Loader

Hand pallet truck accessible.  
Turntable option available.



## PalletPal® Disc Turntables

Rotate loads for nearside access.



## PalletPal® Lift Truck

A palletizer and transporter in one unit.



## Roll-In™ Level Loader

Hand pallet truck accessible  
with four-side access.



## PalletPal® Mobile Leveler

The ultimate in versatility. Use as a transporter,  
feeder, or mobile pallet positioner.



## PalletPal® Level Loader Pneumatic Option

Airbag/Spring combination accommodates  
widely varying load weights.



# Portable Lifts

In virtually every plant, shop, stockroom, warehouse, or office there is a need to transport materials, equipment and supplies from place to place and with an absolute minimum of lifting. Employees often risk injury by carrying objects and loads from one location to another, or from lifting them from the floor to a workbench or shelf. Lifter/transporters combine two important functions in one machine to do the job faster and safer.

Southworth's variety of transport equipment is designed to meet the widest range of application needs:

- Foot pump units are practical and economical
- Double scissor units lift loads over 5'
- Mechanical units are ideal for clean environments
- Power drive units for long distance travel

For more details request our Dandy Lifts catalog.

*Sliding boxes off of pallets, workbenches, or shelves onto lifter/transporters eliminates lifting. Once loaded they move easily around the plant, even in tight spaces where a forklift or pallet truck could not go. Loads can then be vertically positioned (by manual foot pump or electric power), for easy offloading. Workers are more productive, fatigue is reduced and the risk of injury is minimized.*



## Effortlessly Laboratory,



### High Lift Dandy™

Double scissor mechanism for lift heights over 4'.



### Dandy™ Lifter/Transporter

Handy foot pump lifts loads to just the right height.



# Lift and Move Objects in the Plant, Warehouse, or Office



**Backsaver Lite™  
Powered**

Powered drive for easy relocation.



**Pallet/Skid Dandy**

For open bottom pallets or skids weighing up to 1,100 lbs.



**Backsaver Lite™  
Portable**

Can be customized for any application.



**Dandy Leveler™**

Automatically adjusts for level feeding/offloading.



**The Elph™**

Precise powered positioning in a clean, compact unit.

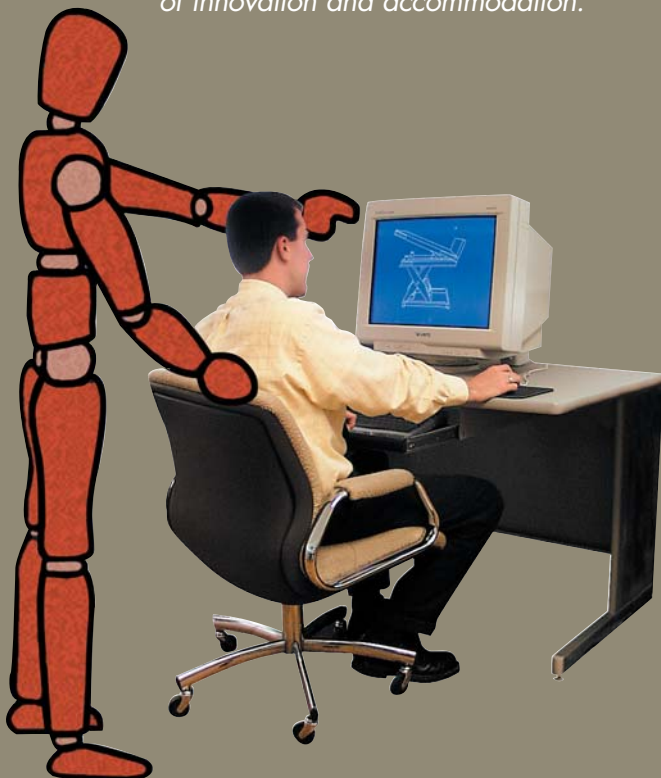
# Engineered Solutions

Southworth has designed, engineered, built, and installed lifts for almost every application imaginable. If we can't satisfy your needs with a standard product, we have the ability to modify a lift or even design a new one specifically for you.

We have seen just about every application imaginable. If you think there is not a piece of equipment to satisfy your needs, think again. If we have not already built it, our engineers will be eager to custom design a solution.

- Years of engineering knowledge
- State-of-the-art 3D CAD system
- Complete product testing

*Southworth has more engineers and a longer history than any other lift table manufacturer. When an application is encountered that requires custom equipment, they work closely with the user to make sure the best possible solution is used. Although there isn't much they haven't seen, they remain dedicated to a philosophy of innovation and accommodation.*



## Facility Lifts, Dock Lifts,



### Coil Cars

Handle jumbo rolls and coils up to 70 tons.



### Dock Lifts

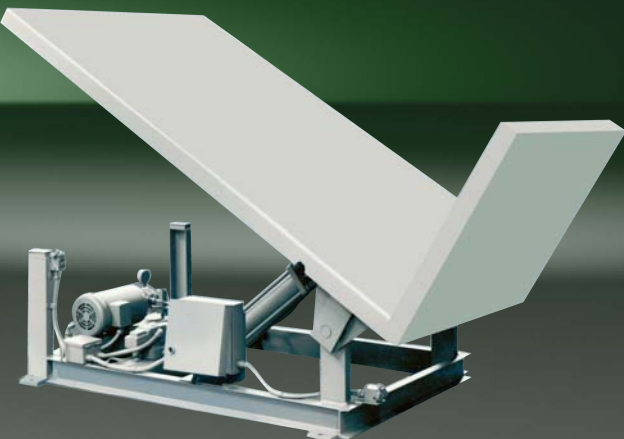
The economical alternative to dock construction.

# Coil Cars and Custom Engineered Solutions



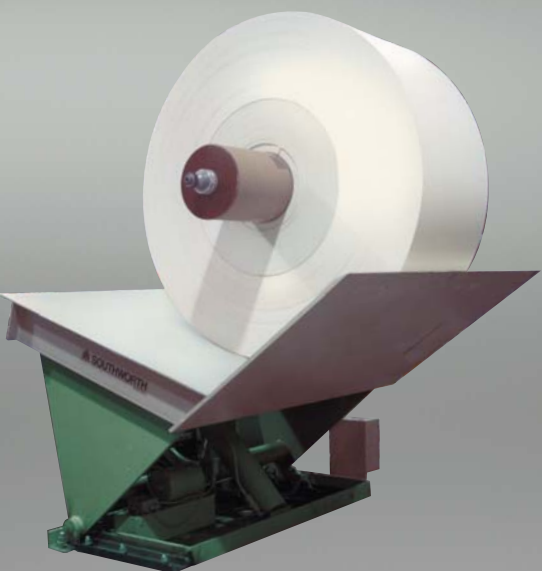
**Vertical Reciprocating  
Conveyors (VRC)**

Move loads between levels safely and efficiently.



**Upenders and Tilters**

Reorient heavy loads 90°.



**Roll Handling Tables**

Lift and position heavy rolls.



**Container Unloaders**

For automatic unloading of a variety of containers.



# Providing Easy, Fast, and Guaranteed Service

## Factory Trained Distributors Make Selection Easy

Southworth Distributors are the industry's best trained. The knowledgeable eyes of these specialists can identify trouble spots for you and in many cases help you to correct workplace problems that are robbing you of productivity and exposing you and your workers to the dangers and multiple costs of injuries.



## Information Is As Fast As a Click

In order to provide customers with the information they need when they need it, Southworth has a comprehensive web site with product specifications, interactive state-of-the-art application guides, an application gallery, budget advice, purchase options and helpful after sale service information.

Visit us at [www.SouthworthProducts.com](http://www.SouthworthProducts.com)



## A Tradition of Innovation and Manufacturing Excellence Delivering the Right Products at the Right Time.

For over 155 years, Southworth has been designing and building products that increase worker and machine productivity. During this long history, Southworth has become the driving force behind the development and design of more lifting, positioning, and transporting equipment than any other company in the world. This dedication to innovation is matched by our commitment to manufacturing excellence.



## All With the Best Guarantee in the Business

Not only do the products ship with the strongest warranty but, Southworth has established an extensive service network to protect your investment for years. From selection to delivery to installation and field support every step of your Southworth experience is guaranteed.



**SOUTHWORTH**  
We'll Show You How

Cherry's Industrial Equipment  
600 Morse Ave, Elk Grove Village, IL 60007  
(800) 350-0011 Fax: (847) 439-0320

